

• Appointment Information

Date: _____

Time: _____

Study: _____

• Our Location

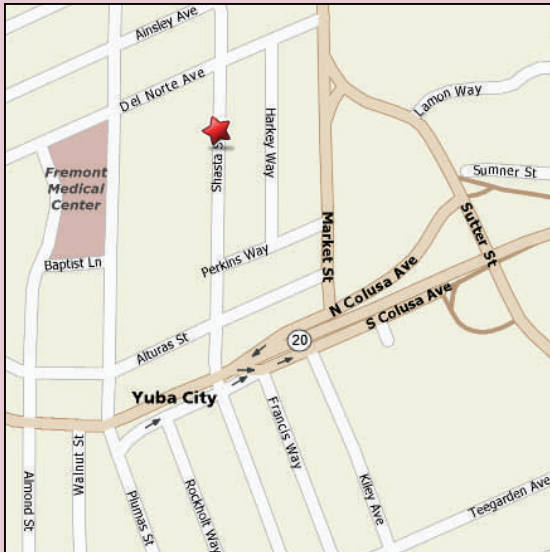
Sutter Buttes MRI

Sutter Buttes Imaging

945 Shasta Street

Yuba City, CA 95991

(530) 674-9000



Sutter Buttes MRI

Sutter Buttes Imaging

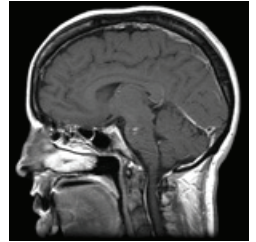
Medical Group Inc.

945 Shasta Street

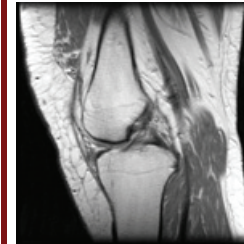
Yuba City, CA 95991

(530) 674-9000

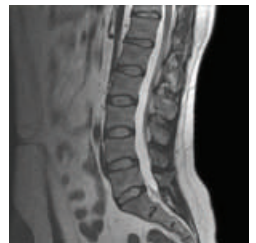
www.sutterbuttesimaging.com



MRI Patient Information



*Serving the Yuba-Sutter
Community since 1954*



SUTTER BUTTES MRI

WELCOME

Your doctor has scheduled you for a Magnetic Resonance Imaging (MRI) exam at **Sutter Buttes Imaging**. This brochure should answer most of the questions you may have concerning your scan. If you have any further questions, please feel free to contact us at **(530) 674-9000**.

• Magnetic Resonance Imaging

MRI is a way of obtaining very detailed images of organs and tissues throughout the body without the need for x-rays. MRI uses a powerful magnetic field, radio waves and a computer to demonstrate whether or not there is an injury or some disease process present. MRI is widely used for imaging soft tissues in the body including the brain, nerves and muscles.

• Our Radiologists and Staff

- Our Board-certified Radiologists
 - Nelson C. Frink, M.D.
 - Daniel M. Dorsey, M.D.
 - Susan A. Lott, M.D.
 - Robert T. Wankmuller, Jr., M.D.
 - Philip D. Shelton, M.D.
 - Lynda Tsinany, M.D.
 - Alka Thakran, M.D.
 - Rahul Gupta, M.D.
- *Our MRI department is accredited by the American College of Radiology, the gold standard in quality assurance certification for MRI centers in the USA.*
- Registered technologists with over 40 years combined experience in Magnetic Resonance Imaging.
- Friendly, courteous office staff to assist you

• Before your MRI Exam

We recommend that you wear comfortable clothing without any metal snaps or zippers. Gowns and scrubs will be available to you if necessary.

You will be asked to remove **all** loose metal objects from your body. For your convenience, we offer storage lockers in which you may keep your valuables during your examination.

Certain medical conditions may prevent you from having an MRI. An exam may not be able to be performed if you have any of the following:

- Pacemaker
- Aneurysm Clips
- Certain cardiac valves
- Metal fragments in one or both eyes
- Any other implanted metal device
- If you think you are pregnant

If a contrast MRI is ordered, **all patients with renal disease will require special screening** to determine if the Gadolinium contrast agent can be administered. If not, we will contact your doctor to discuss the options.

• During your MRI Exam

In the magnet room, the technologist will assist you onto the examination table. The table will then move slowly into the MRI unit, which is an air-conditioned tunnel-like space that is open on both ends. The technologist will have you in full view and will be in contact with you via a two way microphone system.

Throughout the exam, you will hear some loud noises, ranging from buzzing to some knocking. Earplugs will be provided for you in order to minimize the noise level.

Stereo headphones will also be available for you to listen to your favorite radio channel or CD. Please feel free to bring your personal choice of music with you to our facility.

Depending on the exam, your symptoms or prior medical history, you may be given an injected contrast agent called Gadolinium prior to your MRI scan. This contrast will highlight the dense part of the body being examined resulting in a better image.

It is important that you refrain from moving during the exam as this will produce blurred images.

Typically, an MRI will vary in length between 30 and 60 minutes, depending on what type of information your doctor requires.

• After your MRI Exam

Because there are no side effects, you may leave immediately following the procedure. The radiologist will study the MRI images and report the results to your primary physician.

• Insurance

We will bill your insurance company directly. Some insurance carriers require pre-authorization for MRI examinations. Please check with your insurance provider for their requirements.

On the day of your exam, please bring your insurance cards and your referral slip.